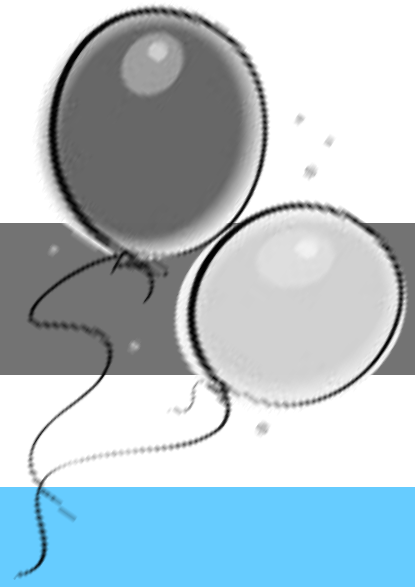


**Thursday
Sept. 7th**

7:30

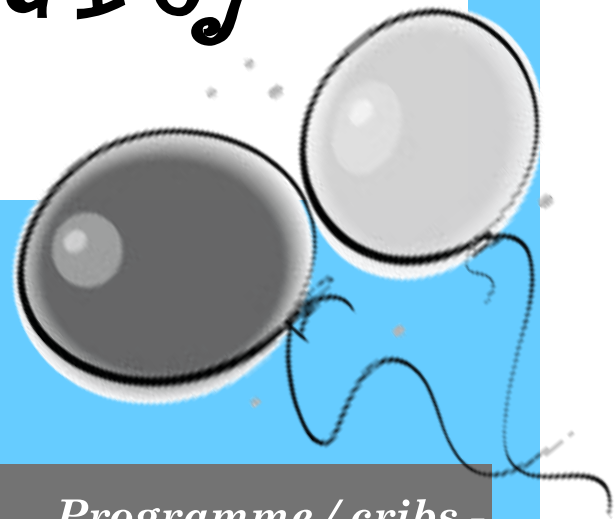


*RSCDS New York
Branch*

Admission ★
\$10
(\$12 non-members)

*Community Center
St. Bartholomew's
Episcopal Church
109 East 50th Street
New York, NY*

Opening Party



*Programme / cribs -
see over.....*

NEW YEAR JIG (J8x32) 3C (4C set) RSCDS Bk 51
 1-8 1c parallel Fig8 on sidelines, 1c Rsh to 2c to start
 9-16 Parallel Reels3 on sidelines, 1c Rsh to 2c to start, 1W facing out at end
 17-24 1W followed by P cast round 2W | dance between 2c to M side ; cast round 2M to 2plx (2c up on [23-24]) (2,1,3)
 25-32 1c+3c RHA ; 2c+1c LHA, 1W facing out at end.

THE BYRON STRATHSPEY (S3x32) 3C set John Drewry Deeside Bk 2
 1-8 All petronella turn into the centre & set to partner, turn 2H 1.1/4 times back to places
 9-16 1s+2L & 3s+2M dance RH across, 2s pass RSh & dance LH across with other couple
 17-24 2s in prom hold dance reel of 3 with 1s passing 1L RSh, end 2s in centre at top
 25-32 2s+1s+3s dance Allemande

THE SAILOR (R8x32) 3C (4C set) RSCDS Bk 24
 1-8 1s cross down RH to face out between 2s & 3s giving hands to each corner & set, 1s cast round 1st corner to form lines of 3 across with 2s/3s & 2s+1s+3s set
 9-16 1s (turning to right) dance RSh reels of 3 across & 1s end passing LSh to 2nd place on opposite sides
 17-24 1s lead down for 2 bars & lead up, cross at the top & cast to 2nd place on own sides
 25-32 2s+1s dance R&L

PELORUS JACK (J8x32) 3C (4C set) B Skelton RSCDS Bk 41
 1-8 1s cross RH & cast 1 place, dance RH across with 3s & 1s end with Man facing his 1st corner with his partner behind him
 9-16 1s dance Alternating Tandem 1/2 reel of 3 with 1st corners, 1s dance Alternating Tandem 1/2 reel with 2nd corners
 17-24 1s dance Alternating Tandem 1/2 reels of 3 with Ladies 1st corner (pstn), 1s dance Alternating Tandem 1/2 reel with Ladies 2nd corner (pstn)
 25-32 1M followed by partner dance into LH across with 2s, 1s retain LH & 1/2 turn to own sides & 2s+1s+3s set

*****BONNIE STRONSHIRAY*** (S8x32) 3C (4C set) R Campbell Glasgow Assembly**
 1-8 1s+2s 3/4 turn 2H to form line up/down centre & dance 1/2 reel of 4, 3/4 turn partners 2H to own sides (having changed places)
 9-16 1s set adv to ptnr & turn 1st corner 2H ending 1L between 2s & 1M between 3s, 1s set adv to partner & turn 2nd crnr 2H ending 2nd place opp sides
 17-24 2s+1s+3s cross RH & 1s cast to right round 3rd corner (pstns) while corners turn right about & Adv+Ret (on diagonal), 2s+1s+3s cross RH (up/down set), 1s cast to right round 4th corner (pstns) & in to face them as 2s+3s turn right about & Adv+Ret
 25-32 1s dance 1/2 RSh reel of 4 with 4th corner (pstns), pass LSh & dance 1/2 reel with 3rd corner (pstns) & turn RH back to place

MRS MACLEOD (of Raasay) (R8x32) 3C (4C set) RSCDS Bk 6
 1-8 1s+2s dance RH across & LH back
 9-16 1s lead down the middle & up to face 1st corners
 17-24 1s set to 1st corners & turn 2H, set & turn 2nd corners
 25-32 1s dance reels of 3 on opposite sides giving LSh to 1st corners & cross to 2nd place own sides

BREAK

GOOD HEARTED GLASGOW (J8x32) 3C (4C set) P Knapman Collins Pocket Ref
 1-8 1s turn RH & cast to 2nd place, turn partner LH 1.1/4 times to end Man facing down & Lady facing up
 9-16 1s dance RH across (Lady with 2s & Man with 3s), 1s pass RSh & dance LH across with other couple
 17-24 1s lead down the middle & back to 2nd place own side
 25-32 2s+1s+3s circle 6H round & back

SLYHERIN HOUSE (S8x32) 3C (4C set) Ronald
 1-8 1s+2s set & link, & circle 4H left, to progressed places.
 9-16 1s cast (M up, L down) dance up/down the middle passing LSh, round 1st corner by the left, & turn LH to finish in centre, L above M, facing opposite sides.
 17-20 1s dance RH across: 1L with 2s, 1M with 3s
 21-24 (Snake) 1L followed by 2L+2M also 1M followed by 3M+3L pass LSh diagonally across to change ends & loop round to left to end in centre RSh to RSh facing partner's side.
 25-32 1s dance LH across with same couples & repeat above, passing RSh diagonally, to end own side.

*****RAMADAN-CE*** (R8x32) 3C (4C set) John Drewry Turkish Set**
 1-8 1s dance Inveran Reels with 2s+3s
 9-16 1s cross RH, cast 1 place & turn RH to face 1st corners
 17-24 1s dance RSh round 1st corner, pass RSh & dance RSh round 2nd corner to end 2nd place opposite side while 1st corners dance in, 1/2 turn RH, twirl & dance out to each others place, 2nd corners dance similarly. (3)(1)(2)
 25-32 1s dance 1/2 LSh reels of 3 across (Man at top with 3s & Lady at bottom with 2s), 1s dance 1/2 RSh reels of 3 on own sides (Man Down, Lady up)

INCHMICKERY (J5x32) 5C set Roy Goldring 14 Social Dances
 1-8 1s+2s circle 4H round to left, 1s dance in & cast to 3rd place
 9-16 1s dance RH across (Lady with 3s & Man with 4s), pass RSh & dance LH across with other couple
 17-24 1L+2M also 1M+5L turn RH, 1L+5M also 1M+2L turn LH (1s end 3rd place own side)
 25-32 1s dance in & cast to 5th place, 5s+1s circle 4H round to right. 2 3 4 5 1

THE LAMMERMUIR HILLS (S8x32) 2C (4C set) Roy Goldring Wells House
 1-8 1s+2s dance Diamond Poussette
 9-16 1L+2M cross RH & cast behind partners back to original places, 1s+2s dance RH across
 17-24 1M+2L cross LH & cast behind partners back to original places, 1s+2s dance LH across
 25-32 1s+2s dance the Knot

THE MONTGOMERIES' RANT (R8x32) 3C (4C set) Castle Menzies RSCDS Bk 10
 1-8 1s cross RH & cast down to 2nd place, cross LH & 1L casts up while 1M casts down
 9-16 1s dance reels of 3 across, 1L with 2s & 1M with 3s
 17-24 1s with nearer hands joined (Lady on Mans left) set to 2L & turn inwards to set to 3M, set to 3L & turn inward & set to 2M
 25-32 2s+1s+3s dance reels of 3 on opposite sides 1s giving RSh to 2nd corner, 1s cross RH to 2nd place own sides

For experienced dancers only