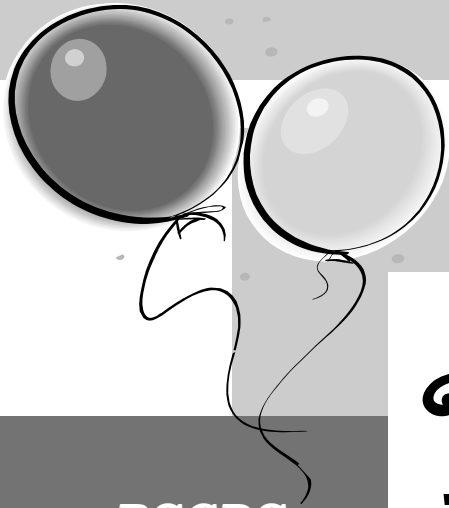
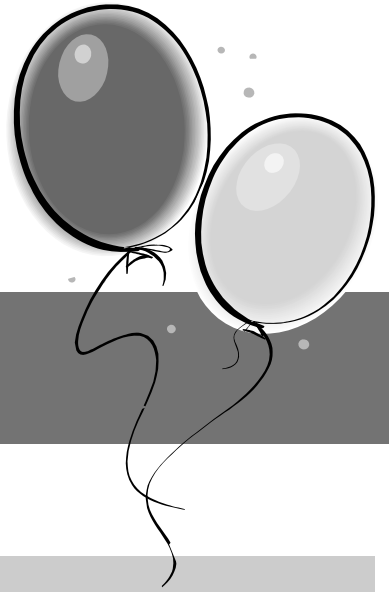
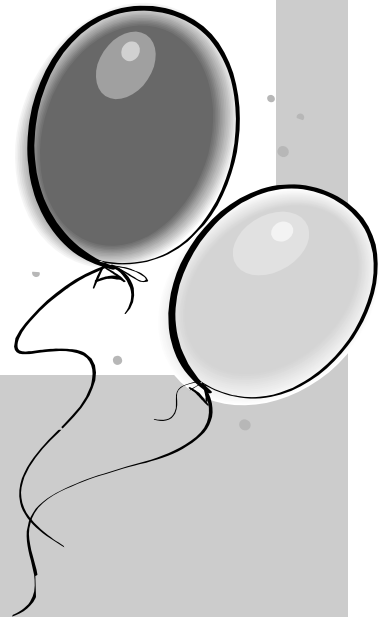


**Thursday
Sept. 8th**

7:30 PM



**Pre-Season
Party**



*RSCDS
New York
Branch*

*Admission
\$10
(\$8 members)*

*Holy Cross
School
43rd Street
(between
8th and 9th
Avenues)*

*Programme / cribs -
see over.....*

CUMBERLAND REEL (J4x32) 4C set RSCDS Bk 1

- 1-8 1s+2s dance RH across & LH across back to places
 9-16 1s lead down the middle & up
 17-32 1s followed by 2s+3s+4s cast down on own sides & lead back up to top, 1s lead down to bottom under arches made by 2s+3s+4s

A TOUCH OF TARTAN (R8x32) 3C (4C set)**I van Maarseveen Dancing Thistles**

- 1-8 1s turn RH, cast 1 place & turn LH to face 1st corners
 9-16 1s dance Back to Back with 1st corners, turn 1st corners RH & pass partner LSh to face 2nd corners
 17-24 1s dance Back to Back with 2nd corners, turn 2nd corners RH & pass partner RSh to 2nd places
 25-32 2s+1s+3s circle 6H round & back

THE GENTLEMAN (S8x32) 3C (4C set) R S Huxley RSCDS Bk 35

- 1-8 1s turn 2H & remain in middle facing each other as 2s step up, 1s+2s set (1s advancing & pass LSh to face opposite partner) & dance ½ reel of 4 across with 2s with 1s ending reel giving LH to face down on own side between 2s
 9-16 1s dance down to end between 3s & face each other, 1s+3s set (1s advancing & pass LSh to face opposite partner) & ½ reel of 4 across with 3s 1s end giving LH to face up on own side between 3s
 17-24 1s lead up to top, cross over & cast to 2nd place & ½ reels of 3 across (L with 2s & M with 3s)
 25-32 2s+1s dance DiamondPoussette

THE BARMKIN (R88) Sq.Set R Goldring 24 G & S Dances

- 1-8 1s+3s turn partners RH & Men followed by Ladies chase clockwise ½ way round set
 9-16 1s+3s dance RH across in centre & LH back to "new" places
 17-32 2s+4s repeat bars 1-16
 33-40 1s+3s turn partners LH & Ladies followed by Men chase anticlockwise ½ way round set
 41-48 1s+3s dance R&L
 49-64 2s+4s repeat bars 33-48
 65-72 All dance into centre & return with corners, Ladies dance round corners passing in front to begin & back to place
 73-80 All with corners dance into centre & return with partners, Men dance round partners passing in front to begin & back to place
 81-88 All circle 8H round & back

*****THE BEES OF MAGGIEKNOCKATER (J4x32) 4C set*******J Drewry Canadian Bk**

- 1-8 1s cross RH & cast 1 place, dance RH across with 3s & end 1M+3L also 1L+3M in prom hold facing out to pass corner person RSh
 9-24 All dance 4x½ Reels of 3 on sides (to right to start, then left, right & left) with 1s+3s changing partners in centre at end of each ½ Reel to progress Men clockwise & Ladies anticlockwise. End in centre 1s facing down & 3s facing up
 25-32 1s dance between 3s turning 3s with nearer hand 1½ times, crossing over to own sides & turn 4th person 1½ times (Men RH & Ladies LH)

THE BYRON STRATHSPEY (S3x32) 3C set J Drewry Deeside Bk 2

- 1-8 All petronella turn into the centre & set to partner, turn 2H 1¼ times back to places
 9-16 1s+2L & 3s+2M dance RH across, 2s pass RSh & dance LH across with other couple
 17-24 2s in prom hold dance reel of 3 with 1s passing 1L RSh, end 2s in centre at top
 25-32 2s+1s+3s dance Allemande

THE HUNTING HORN (J8x32) 3C (4C set) P McBride SCD Archives

- 1-8 1s cast 1 place, cross RH, cast below 3s & dance up middle to 2nd place BtoB in centre for Double Triangles
 9-16 1s dance Double Triangles & end facing 2nd corners
 17-24 1s dance diagonal reels of 4 with 2nd corners, pass partner LSh to face 1st corners
 25-32 1s dance reels of 4 with 1st corners, pass partner LSh to end in 2nd place facing out to start next sequence

MRS MACLEOD (of Raasay) (R8x32) 3C (4C set) RSCDS Bk 6

- 1-8 1s+2s dance RH across & LH back
 9-16 1s lead down the middle & up to face 1st corners
 17-24 1s set to 1st corners & turn 2H, set & turn 2nd corners
 25-32 1s dance reels of 3 on opposite sides giving LSh to 1st corners & cross to 2nd place own sides

Intermission**MRS STEWART'S JIG (J8x32) 3C (4C set) F Ligtmans RSCDS Bk 35**

- 1-8 1s set, 1L followed by partner casts 2 places, 1L crosses (below 3s) & casts up on Men's side to 2nd place facing down while 1M dances round 3L & up the middle to 2nd place Ladies side facing down
 9-16 2s+1s+3s dance Grand Chain, end with 2M & 1M facing out
 17-24 2s+1s dance Ladies Chain
 25-32 2s+1s+3s Adv+Ret for 2 steps & 1s turn 1½ RH to own sides

*****THE FALLS OF ROGIE (R8x32) 3C (4C set)*******J Attwood Alexander Bk 1**

- 1-8 1s cross RH & cast 1 place, 1s cross RH & cast 1 place (Man up Lady down)
 9-16 1s dance ½ reels of 3 across (1M with 2s & 1L with 3s), set in lines across & change places RH with opposite person
 17-24 2s+1s+3s chase cl'wise ½ way, 1s dance in & turn RH to face 1st crnr pstrns as 2s & 3s continue to chase on to places (as bar 16)
 25-32 1s dance ½ reel of 4 with 1st corners, passing RSh dance ½ reel with 2nd corners & cross passing RSh to 2nd place own sides

THE DUNDEE WHALER (S4x32) 4C set R Clowes Ormskirk 1

- 1-8 2s & 4s dance Petronella to opposite sides
 9-16 1s+2s & 3s+4s dance Ladies Chain
 17-24 1s & 3s dance Petronella to opposite sides
 25-32 1L+2M change places LH, 1M+2L also 1L+3L change places RH, 1M+3M also 1L+4M change places LH & 1M+4L change RH

IT'S NOT ROCKET SCIENCE (J8x32) 3C (4C set)**J Reiner & E Mellott Delaware Valley Silver**

- 1-8 1s+2s set, cross RH, set & petronella turn into centre
 9-16 1s+2s dance ½ reel of 4 & turn partners 1¼ times to own sides
 17-24 2s+1s dance R&L
 25-32 2s+1s+3s circle 6H round & back

*****THE BLACK MOUNTAIN REEL (R5x32) 5C set*******D Haynes Carnforth Coll 3**

- 1-8 1s & 3s cross RH & cast down 1 place, dance ½ Fig of 8 round the couples above them & cross to face 1st corners
 9-16 1s & 3s turn 1st corners RH & partner LH, turn 2nd corner RH & partner LH to face 1st corners again
 17-24 1s & 3s dance diagonal reels of 4 with 1st corners
 25-32 All dance RH across once round (1L with 2s, 1M+3L with 4s & 3M with 5s), 1s & 3s turn ptrns LH & cast one place

MISS MILLIGAN'S STRATHSPEY (S8x32) 3C (4C set)**Golden Jubilee Dances**

- 1-8 1s+2s circle 4H round to left, 1s turn to face 2s & set, 1s cast while 2s dance up
 9-16 2s+1s+3s dance mirror reels of 3 on own sides 1s dancing in between 3s to start
 17-24 2s+1s+3s set, 2s+1s ½ turn LH, 1s followed by 2s lead down between 3s, cross & cast up on own sides
 25-32 1s+2s dance the Knot

MAIRI'S WEDDING (R8x40) 3C (4C set) Cosh 22 SCDs

- 1-8 1s turn RH & cast to 2nd place, 1s turn LH to face 1st corners
 9-16 1s dance ½ diagonal reel of 4 with 1st corners, 1s dance ½ diagonal reel with 2nd corners
 17-24 1s dance ½ diagonal reel with 3rd corner (pstrns), ½ diagonal reel with 4th corner (pstrns)
 25-32 1s dance reel of 3 across (Lady with 2s, Man with 3s - LSh to 1st corner)
 33-40 2s+1s+3s circle 6H round & back

*****For experienced dancers*****